

# Welcome to Arab Health 2021

Live and Online Exhibitor Onboarding



# Contents

## Hybrid Exhibitor Journey

- ▶
- ▶
- ▶
- ▶
- ▶

## Online-only Exhibitor Journey

- ▶
- ▶
- ▶
- ▶

# Hybrid Exhibitor Journey

# Hybrid Exhibitor Journey

Exhibitor technology and set up journey



## Welcome Email

Access Customer Center

## Customer Center

Exhibitor Requirements  
Access exhibitor portal (VISIT)  
Access online event (Swapcard)



## VISIT Portal

Register to the Live and Online Events  
Collect leads  
Generate QR codes  
Leads Analysis



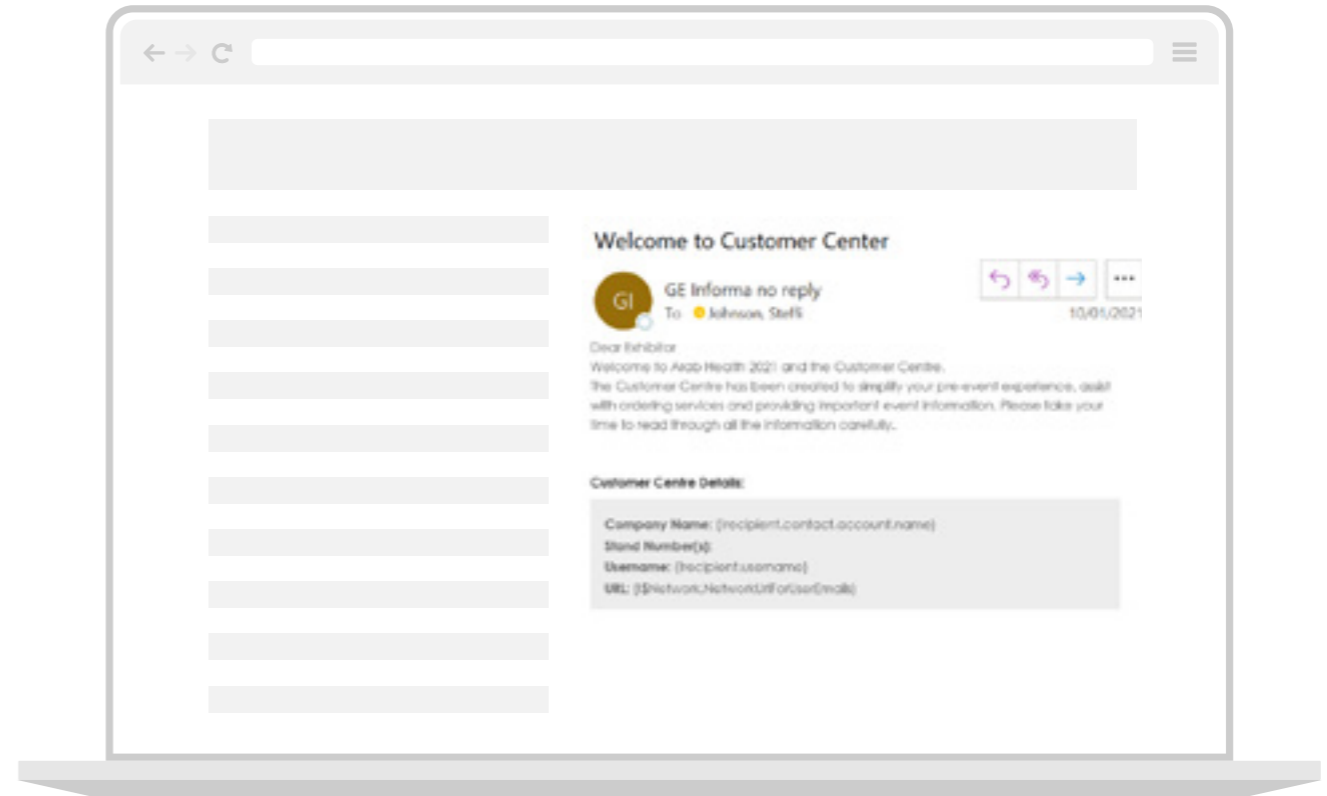
## Online Event (Swapcard)

Complete Your Profile  
Upload products  
Setup meetings  
Network  
Generate leads  
Analyse performance

# Hybrid Exhibitor Journey

## Welcome Email

Once your contract is signed and submitted into Salesforce, an automated email will be sent to you with login details to access the Customer Centre.

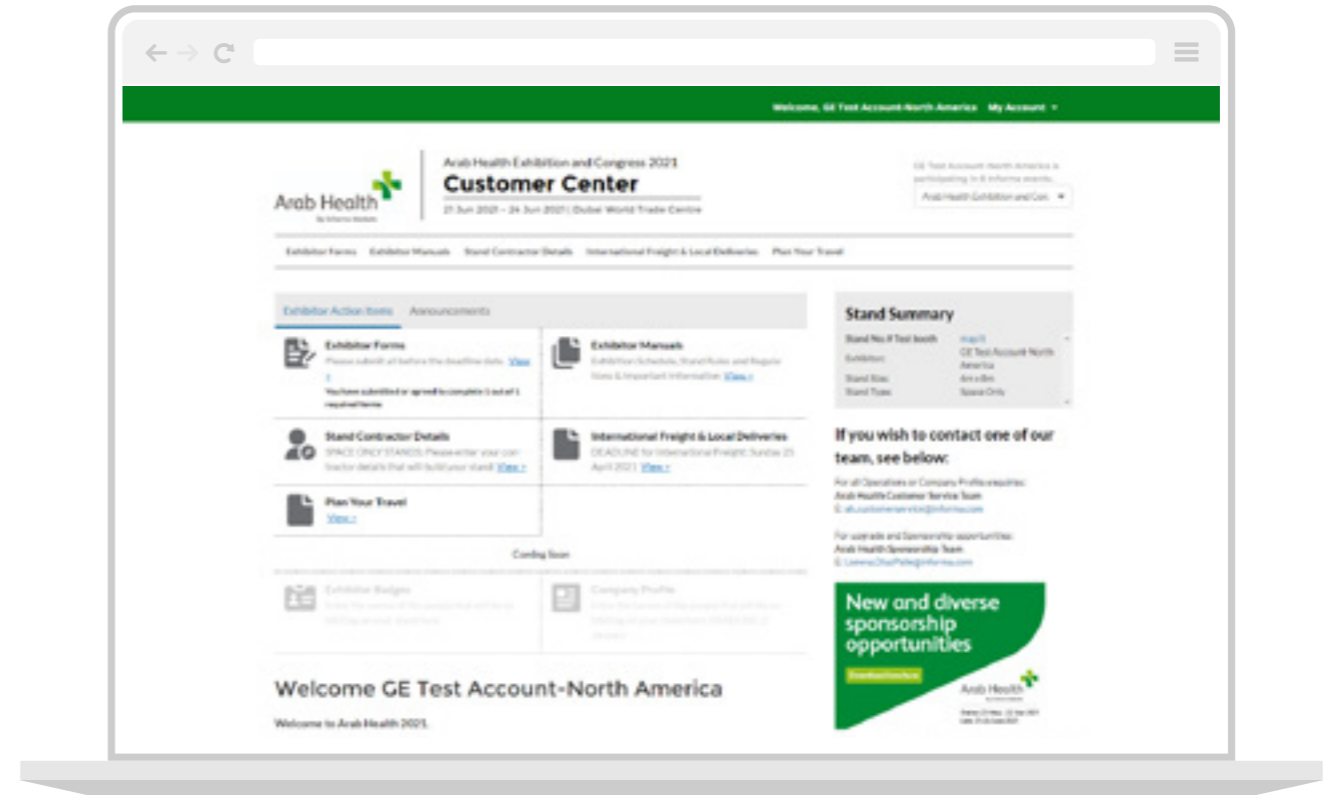


# Hybrid Exhibitor Journey

## Customer Center - Platform Features

The Customer Center has all the information and tools you need for a successful show.

Through the customer center you will be able to order services & utilities from all vendors, register for staff badges, find a checklist and other helpful information and hints for all aspects of preparing for the show as well as access Swapcard and VISIT to complete your company profile and order badges. This is your primary platform for the hybrid event.



# Hybrid Exhibitor Journey

## VISIT - Platform Features

Through Visit Connect, Arab Health exhibitors will be able to register their team members.

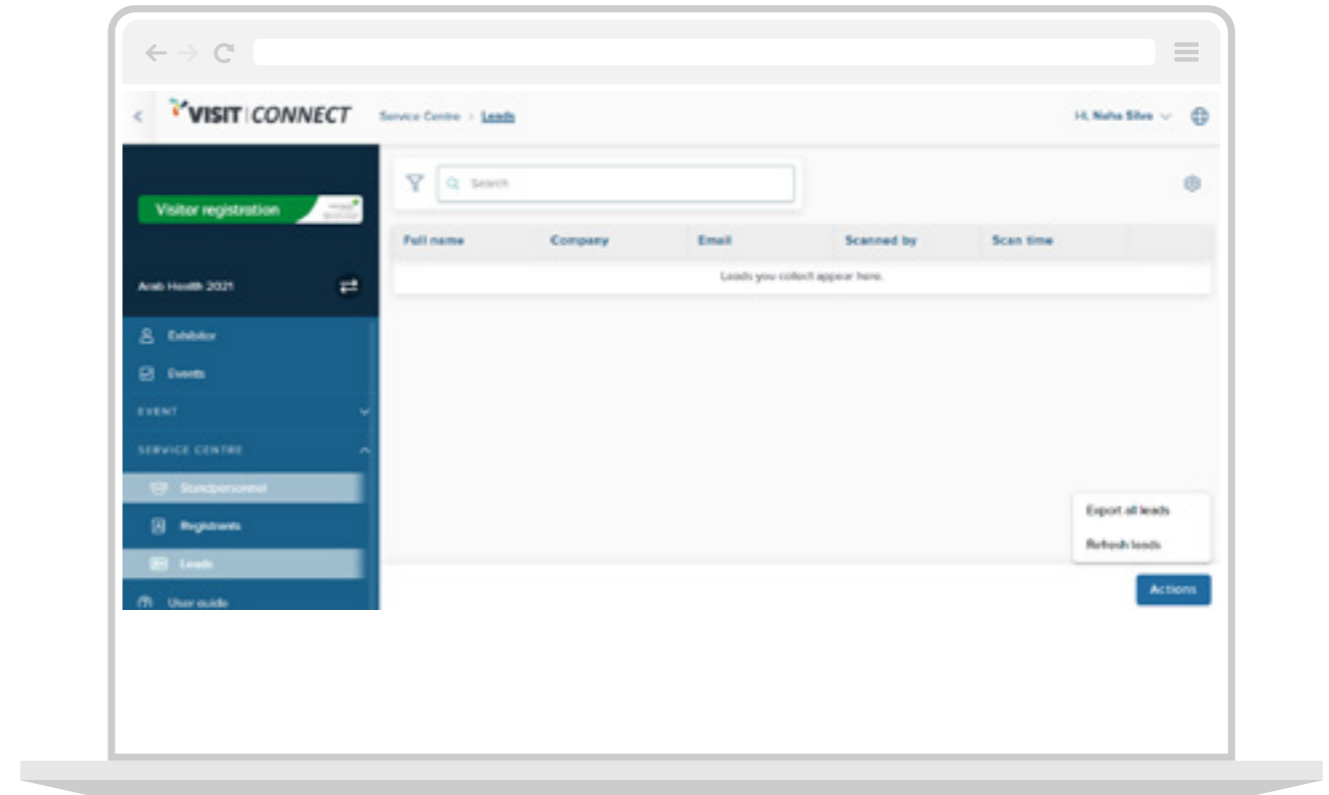
### Standpersonnel

Under the Standpersonnel tab, exhibitors will be able to register their team members and track the number of badges available to them based on their stand size.

**N.B. please note that exhibitor form should be filled by the primary contact for each colleague.**

### Lead Retrieval

The lead capture and content management solution of VISIT offers exhibitors total control over their sales process and resulting success. Under the Leads tab, exhibitors will be able to access all the information of leads collected.



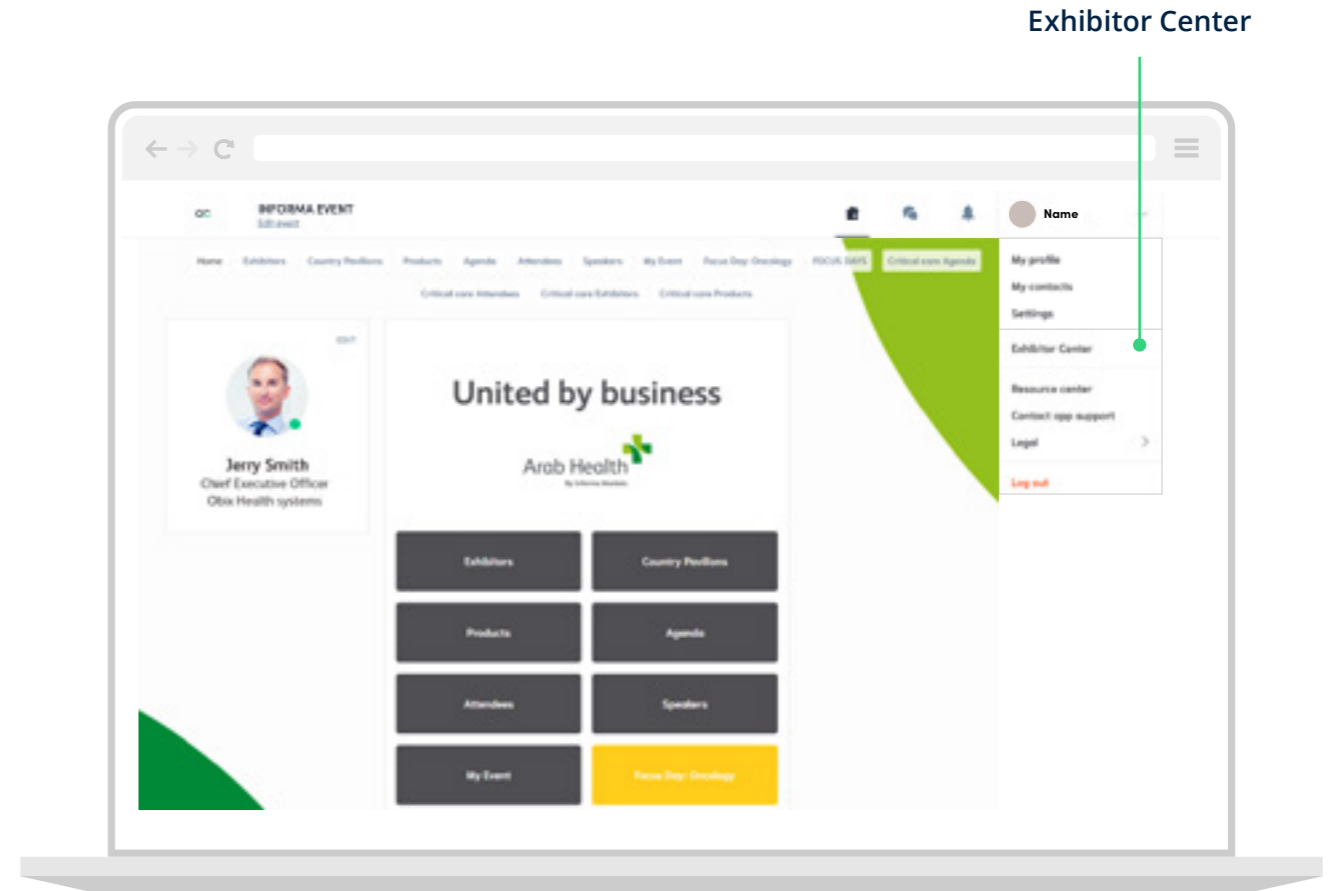
# Hybrid Exhibitor Journey

## Swapcard - Platform Features

Swapcard is the technology used for the online event of Arab Health. As an exhibitor this is where your virtual showcase will be hosted and where you will be able to setup meetings, attend or present live sessions as well as network with attendees and generate leads.

To access the Arab Health event on Swapcard, a link will be provided to you on the Customer Center.

Once you gain access to the event page you may start by visiting the Exhibitor Center from the drop-down menu on the right-side. The Exhibitor Center is the control centre to your company and its booth. Your company profile should be filled in well in order to attract as many unique visitors to your booth as possible.





# Online-only Exhibitor Journey

# Online-only Exhibitor Journey

Exhibitor technology and set up journey



## Welcome Email

Access registration form (VISIT)  
Access online event (Swapcard)



## VISIT Portal

Register to the Online Event



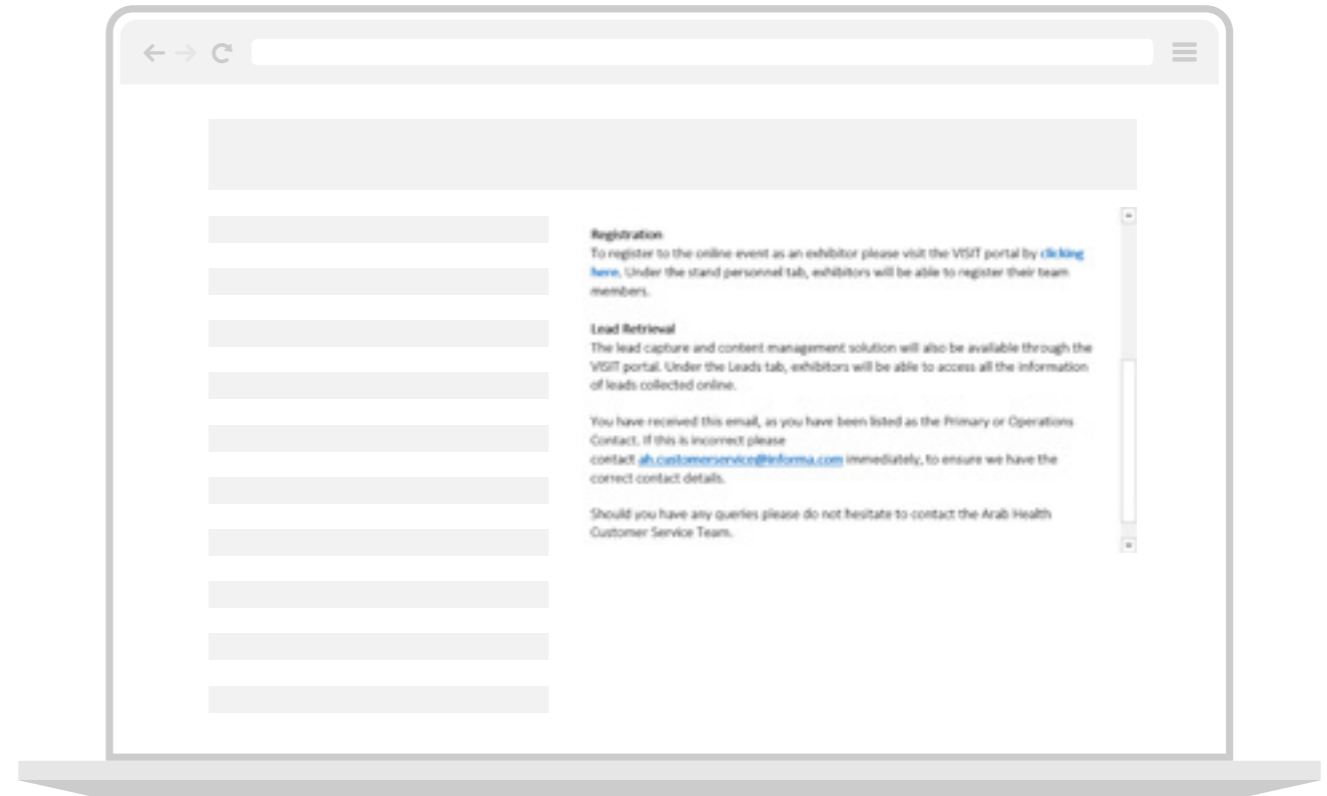
## Online Event (Swapcard)

Complete Your Profile  
Upload products  
Setup meetings  
Network  
Generate leads  
Analyse performance

# Online-only Exhibitor Journey

## Welcome Email

Once your contract is signed and submitted into Salesforce, an email will be sent to you with a link to access VISIT (the registration and lead retrieval portal of the event) and another link to Swapcard (the host application of the online event)



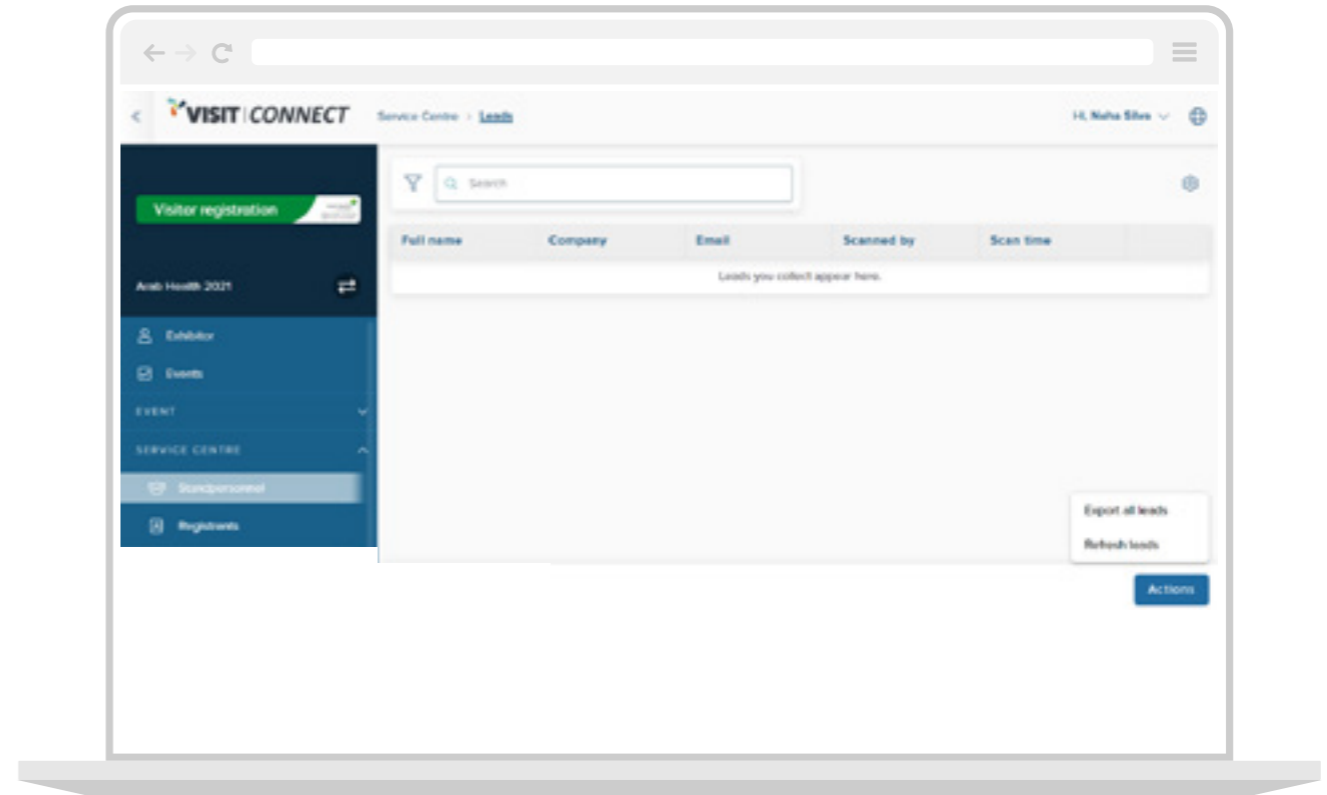
# Online-only Exhibitor Journey

## VISIT - Platform Features

Through Visit Connect, Arab Health exhibitors will be able to register their team members.

### Standpersonnel

Under the Standpersonnel tab, exhibitors will be able to register their team members.



# Online-only Exhibitor Journey

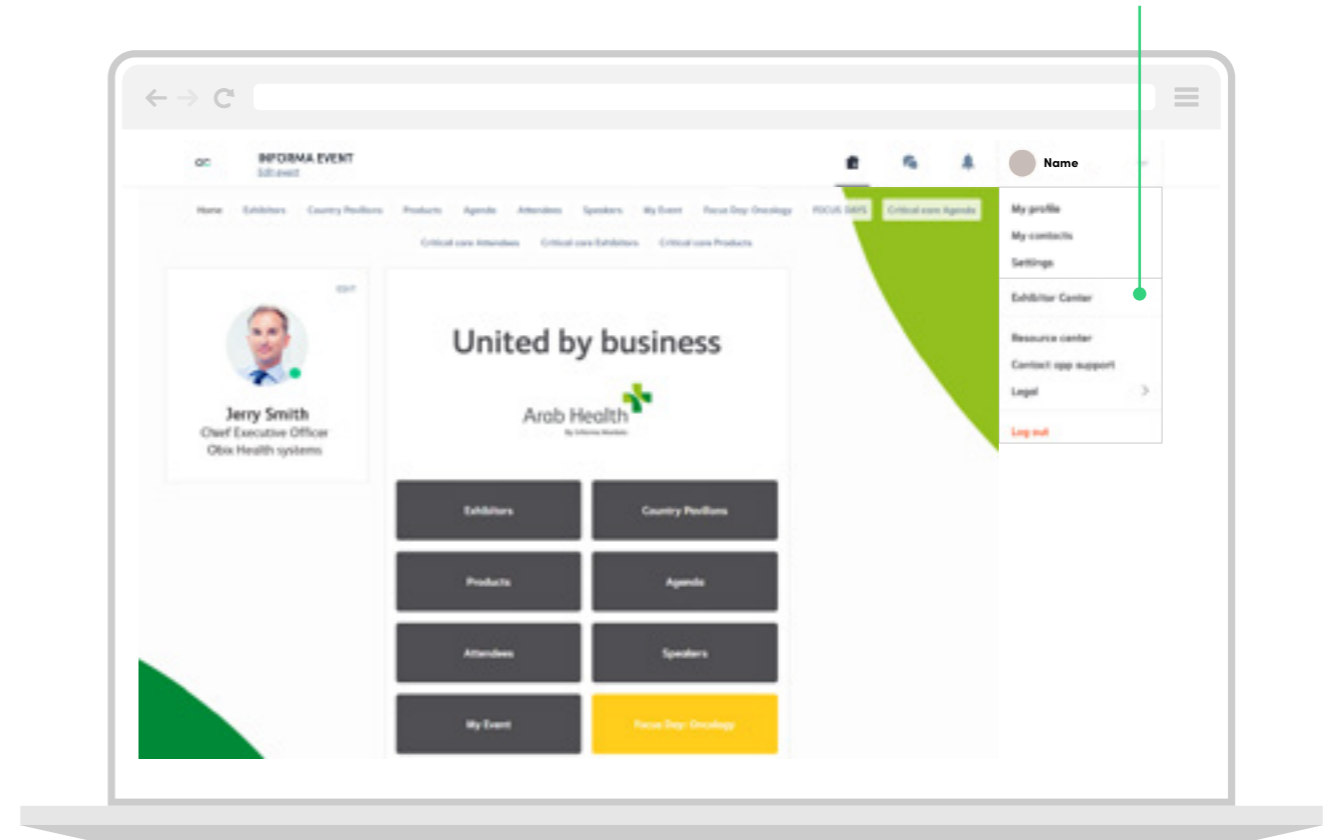
## Swapcard - Platform Features

Swapcard is the technology used for the online event of Arab Health. As an exhibitor this is where your virtual showcase will be hosted and where you will be able to setup meetings, attend or present live sessions as well as network with attendees and generate leads.

To access the Arab Health event on Swapcard, a link will be provided to you in the welcome email.

Once you gain access to the event page you may start by visiting the Exhibitor Center from the drop-down menu on the right-side. The Exhibitor Center is the control centre to your company and its booth. Your company profile should be filled in well in order to attract as many unique visitors to your booth as possible.

Exhibitor Center



# Contact

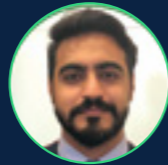
Contact the team today to discuss a range of options and bespoke solutions to help you achieve your objectives.

For general inquiries:

Customer Service Team  
[ah.customerservice@informa.com](mailto:ah.customerservice@informa.com)



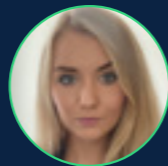
**Ross Williams**  
Exhibition Director  
[Ross.Williams@informa.com](mailto:Ross.Williams@informa.com)



**Amitabh Shahani**  
Exhibition Manager  
[Amitabh.Shahani@informa.com](mailto:Amitabh.Shahani@informa.com)



**Lorena Roxas**  
Exhibition Sales Manager  
[Lorena.Roxas@informa.com](mailto:Lorena.Roxas@informa.com)



**Ekaterina Anishchenko**  
Exhibition Sales Manager  
[Ekaterina.Anishchenko@informa.com](mailto:Ekaterina.Anishchenko@informa.com)